

Media Profile Installation Guide for Wasatch SoftRIP®

Instructional Bulletin #6.73 (Revision 1)

Dated: 12/31/14

1.0 Scope

The procedure for installing Avery Dennison Graphics media profiles once they have been downloaded from the Avery Dennison Graphics Profile Download Wizard. <http://avery-us.color-base.com/>

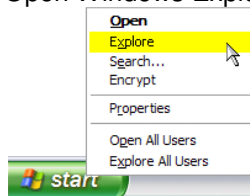
2.0 Downloading

Extract the Avery Dennison Wasatch SoftRIP imaging configuration folder from the downloaded ZIP file to a convenient temporary location on your computer.

NOTE: After successful installation, the downloaded zip file can be deleted, or saved for backup.

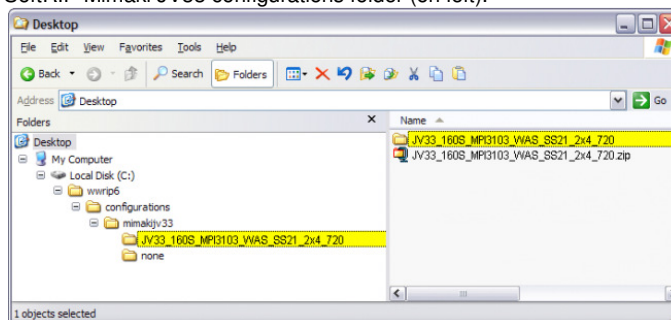
3.0 Installing

1. Open Windows Explorer (right click on the Windows Start button > Explore).



2. Move or copy the Avery Dennison imaging configuration folder extracted in Step 1 into the Wasatch SoftRIP configuration folder for your printer model.

The example below shows an Avery Dennison imaging configuration folder (JV33_160S_MPI3103_WAS_SS21_2x4_720) extracted to the Desktop (on right), and copied into the Wasatch SoftRIP Mimaki JV33 configurations folder (on left).



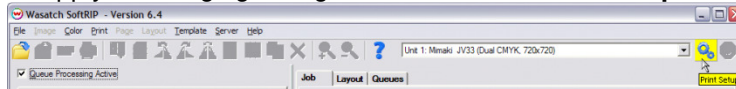
Note: The default Wasatch SoftRIP install location is C: > wrip# (# representing software version) > configurations > "printer name".

Exit Windows Explorer and launch or return to the Wasatch SoftRIP main window.

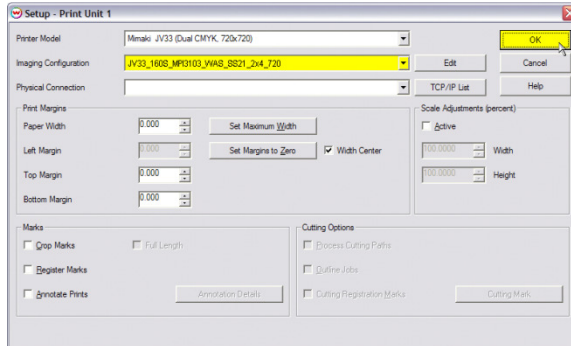
Section 6 – Special Product Information Instructional Bulletin

4.0 Applying

1. To apply the imaging configuration: Click the **Print Setup** button.



2. Choose the Avery Dennison imaging configuration from the **Imaging Configuration** pull-down menu and click **OK**.



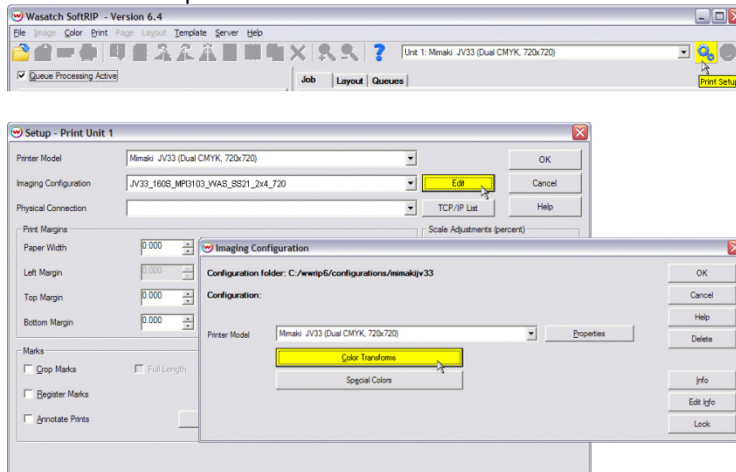
Note: Newly added jobs will now automatically have this media profile and the recommended settings applied. Existing jobs will need reprocessed for this profile to apply.

5.0 Additional Notes

- **Additional Optimization** – It is recommended to set up the ICC Input Profiles and ICC Rendering Intents for your imaging configurations. These settings will have an effect on output, and may vary depending on printing requirements. For guidance on working with these settings, consult the Wasatch SoftRIP help file, or contact Avery Dennison Technical Support for further information.

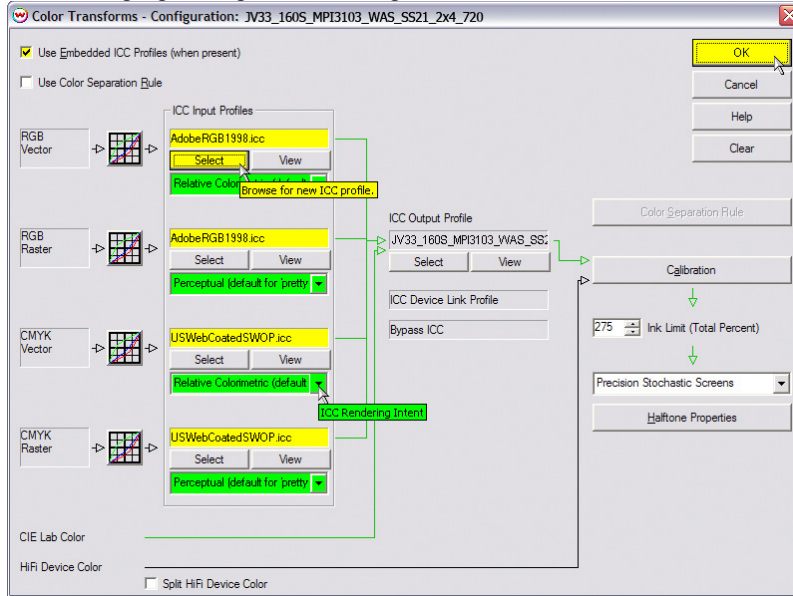
An example of how to access and change these settings is provided below.

1. Click Print Setup > Edit > Color Transforms



Section 6 – Special Product Information Instructional Bulletin

The Color Transforms window will allow the selection of ICC Input Profiles and ICC Rendering Intents to match specific printing requirements. These settings will only apply to the imaging configuration being edited.



By enabling the “Use Embedded ICC Profiles (when present)” feature, Wasatch SoftRIP will use the embedded profile in the source file being printed. If the source file does not have an embedded profile, it will use the input profiles specified in this window.

Note: When browsing for ICC Input Profiles outside of the default Wasatch SoftRIP folder, the default location for profiles in Windows computers is: Windows > System32 > spool > drivers > color. If you do not find some of the common ICC input profiles available on your computer, many are available as free downloads from Adobe.com and color.org.

2. Once making a change to an imaging configuration, Wasatch SoftRIP will prompt to save these changes. It is recommended that a new name is given so that the original is left separate and unmodified.

- **Feed Adjustment and Alignment Settings** - The media profiles do not contain feed adjustment settings. It is recommended to set this manually on the front panel of the printer when loading a new roll of media and additionally as needed. It is also recommended to check and perform the printer’s Bi-Directional alignments. Depending on the printer manufacturer, different terminology may be used for these adjustments. Please consult your manual for further information on accessing these features.

Correct feed adjustment will help minimize or eliminate associated horizontal banding, and correct bi-directional alignment will improve dot placement for a crisper, less “grainy” look.

- **Default Profile Settings** - The media profiles have been provided with default settings that have been found optimal for printing with Avery Dennison media. It is generally recommended that the pre-determined print speed, ink limit information, etc., not be changed as doing so may introduce ink drying, color or other printing issues. To address the unique characteristics of a specific printer and printing environment, heater settings may be adjusted incrementally as necessary, and re-linearization is recommended if possible.

Section 6 – Special Product Information Instructional Bulletin

- The information contained herein is believed to be reliable but Avery Dennison makes no representations concerning the accuracy or correctness of the data. This product, like any other should be tested by the customer/user thoroughly under end user conditions to ensure the product meets the particular requirements. Independent results may vary.

Avery Dennison® and the logo are registered trademarks of Avery Dennison Corp.

Revisions have been italicized.

Wasatch SoftRIP® is a registered trademark of Wasatch Computer Technology, Inc.

Other third party trademarks and trade names may be used herein and are the property of their respective owners.

©2011 Avery Dennison Corporation. All Rights Reserved.

Section 6 – Special Product Information Instructional Bulletin

Page 4 of 4



Graphics
Solutions

www.graphics.averydennison.com
Customer Service: 800-282-8379