

Media Profile Installation Guide for Mimaki Raster Link Pro III[®]

Instructional Bulletin #6.72 (Revision 1)

Dated: 12/31/14

1.0 Scope

The procedure for installing Avery Dennison Graphics media profiles once they have been downloaded from the Avery Dennison Graphics Profile Download Wizard. <http://avery-us.color-base.com/>

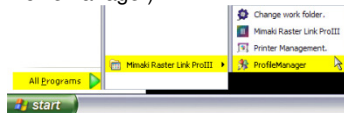
2.0 Downloading

Extract the Avery Dennison Mimaki Raster Link Pro III media profile (ex:profile_name.icc) from the downloaded ZIP file to a convenient temporary location on your computer.

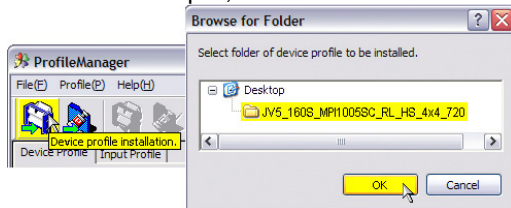
NOTE: After successful installation, you may delete the downloaded files, or save them for backup.

3.0 Installing

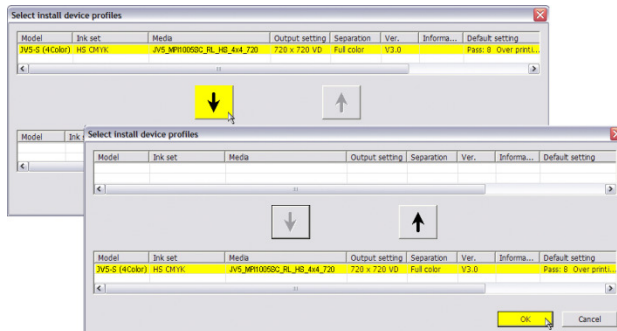
1. Open **Mimaki Profile Manager** (Windows Start Button > All Programs > Mimaki Raster Link Pro III > ProfileManager).



2. Click the **“Device profile installation”** button. Browse to the media profile folder extracted in Step 1, select it and click **OK**.



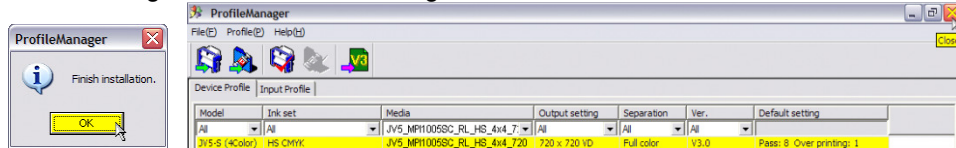
3. The profile will appear at the top of the **“Select install device profiles”** window. Select the profile and click the **DOWN** arrow. This will move the profile listing to the bottom half of the window. Click **OK**.



Section 6 – Special Product Information

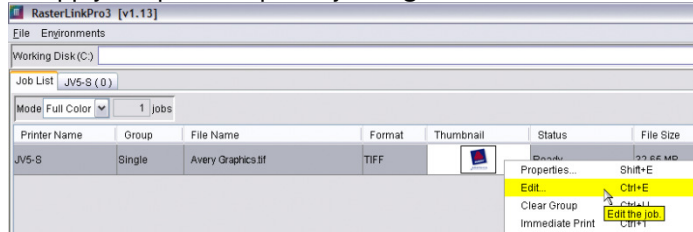
Instructional Bulletin

- Click **OK** to finish installation. The profile will now appear in the list of installed profiles in ProfileManager. Close ProfileManager and launch Mimaki Raster Link Pro III.

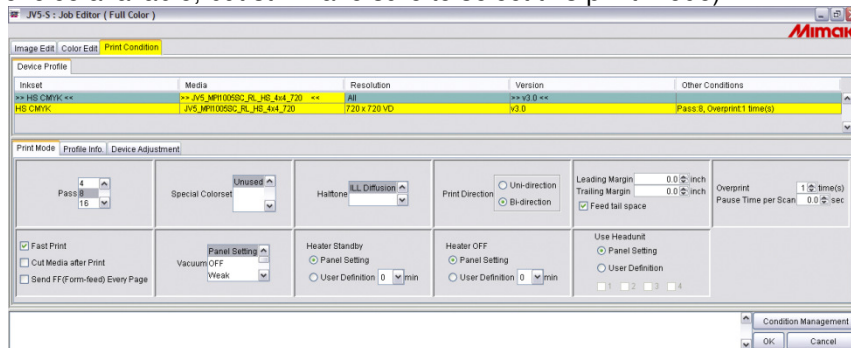


4.0 Applying

- To apply the profile, open a job, **right click** on it in the Job List, and choose **Edit**.

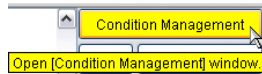


- Select the **Print Condition** tab. Under the **Media** column, select the top listing, and choose the name of the profile that you installed. A list of available print modes will appear below. **Select the mode** of the profile you wish to use. (There may only be one choice available, but still make sure to select this print mode).



NOTE: You will see the settings in the bottom Print Mode tab change to those included and recommended for the profile.

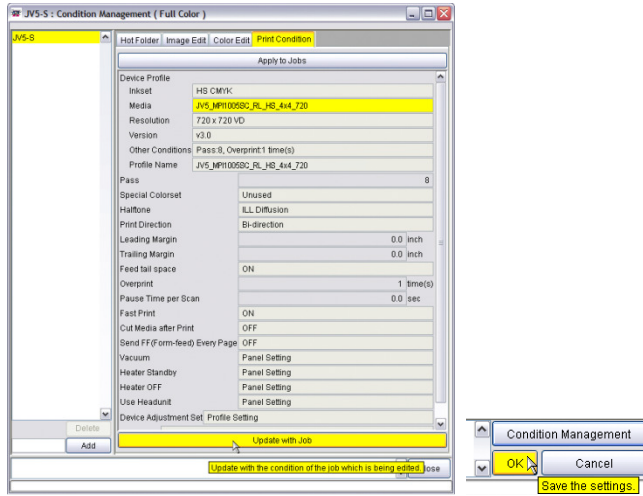
- Click the **Condition Management** button in the bottom right of the Job Editor window.



Select your printer > select the **Print Condition** tab > **Update With Job** (you will see the settings change to those of the profile). **Close** the Condition Management window, then click **OK** in the Job Editor window to save the settings.

NOTE: Newly added jobs will automatically have this media profile and the recommended settings applied. Existing jobs will need their settings changed to those above and reprocessed for this profile to apply.

Section 6 – Special Product Information Instructional Bulletin

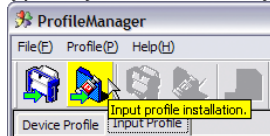


5.0 Additional Notes

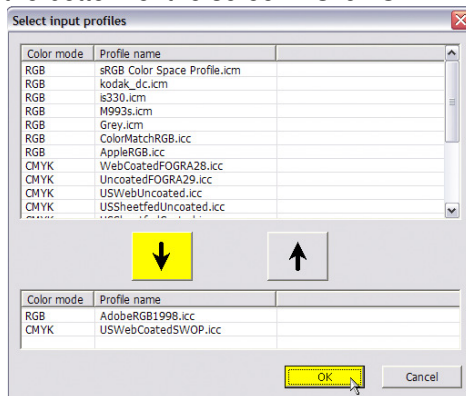
- Input Profiles** - We recommend setting up the ICC Input Profiles and ICC Rendering Intents to further color manage your printing. These settings will have an effect on your output, and may vary depending on your needs. For guidance on working with these settings, consult the Mimaki Raster Link help file, or contact Avery Dennison Technical Support for more information.

An example of how to access and change these settings is provided below.

- Open **Mimaki Profile Manager**, and choose the second icon: **Input Profile Installation**. Browse to your operating system's profile folder (ex: for Windows computers, this is typically Windows > System32 > spool > drivers > color).



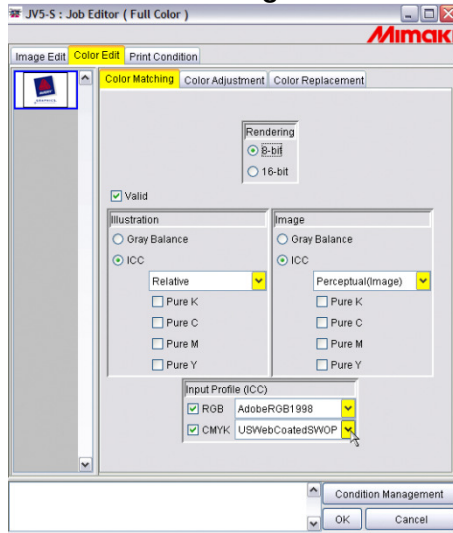
- Select the ICC profiles that you would like to install based on what you typically use for your source files (sRGB, AdobeRGB, etc.), and click the **down** arrow so they appear in the bottom of the screen. Click **OK**.



Section 6 – Special Product Information Instructional Bulletin

NOTE: If you do not find some of the common ICC input profiles available on your computer, many are available as free downloads from Adobe.com and color.org.

3. Once installed, these can be chosen when editing a job in **Job Editor**, under the **Color Edit > Color Matching** tab.



- **Feed Adjustment and Alignment Settings** - The media profiles do not contain feed adjustment settings. We recommend setting this manually on the front panel of your printer loading a new roll of media and additionally as needed. We also recommend checking and performing the printer's Bi-Directional alignments. Please refer to your printer's manual for details on making these adjustments.

Correct feed adjustment will help minimize or eliminate associated horizontal banding, and correct bi-directional alignment will improve dot placement for a crisper, less "grainy" look.

- **Default Profile Settings** - The media profiles have been provided with default settings that we have found optimal for printing with our media. We generally recommend that you do not change pre-determined print speed, ink limit information, etc., as doing so may introduce ink drying, color or other printing issues. To address the unique characteristics of your own printer and printing environment, heater settings may be adjusted incrementally as necessary, and re-linearization is recommended if you have the ability to do so.
- The information contained herein is believed to be reliable but Avery Dennison makes no representations concerning the accuracy or correctness of the data. This product, like any other should be tested by the customer/user thoroughly under end user conditions to ensure the product meets the particular requirements. Independent results may vary.

Avery Dennison® and the logo are registered trademarks of Avery Dennison Corp.

Revisions have been italicized.

Mimaki Raster Link Pro III® is a registered trademark of Mimaki Engineering Co., LTD.

Other third party trademarks and trade names may be used herein and are the property of their respective owners.

©2011 Avery Dennison Corporation. All Rights Reserved.

Section 6 – Special Product Information Instructional Bulletin

Page 4 of 4



Graphics
Solutions

www.graphics.averydennison.com
Customer Service: 800-282-8379