

Media Profile Installation Guide for Onyx PosterShop®

Instructional Bulletin #6.74 (Revision 1)

Dated: 12/31/14

1.0 Scope

The procedure for installing Avery Dennison Graphics media profiles once they have been downloaded from the Avery Dennison Graphics Profile Download Wizard. <http://avery-us.color-base.com/>

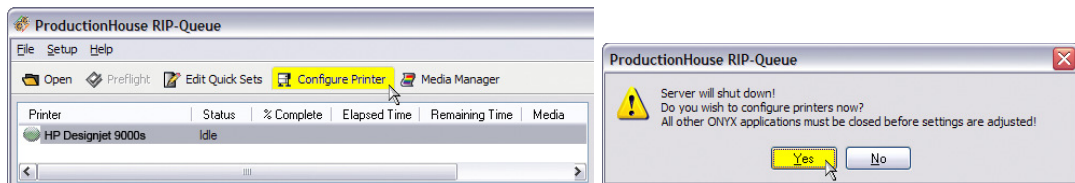
2.0 Downloading

Extract the Avery Dennison Onyx PosterShop media library file (ex: *profile_name.oml*) from the downloaded ZIP file to a convenient temporary location on your computer.

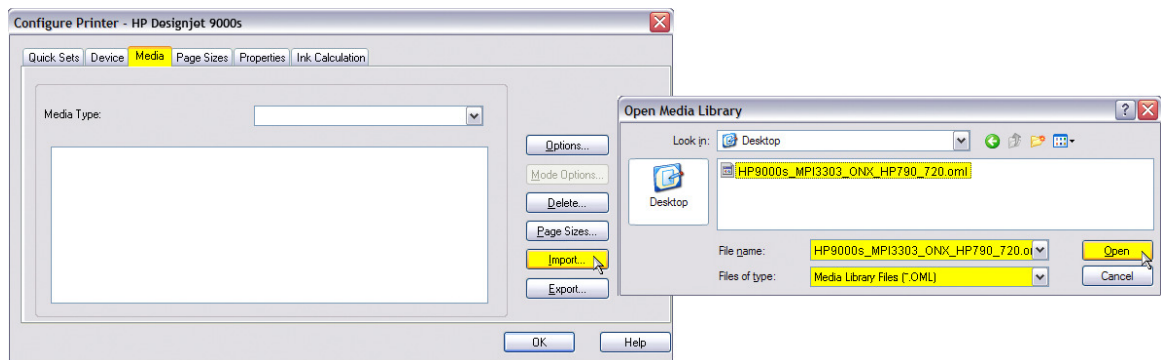
NOTE: After successful installation, the downloaded files can be deleted, or saved for backup.

3.0 Installing

1. In Onyx RIP-Queue, select the printer and click **Configure Printer**. Click **Yes** to the next message.

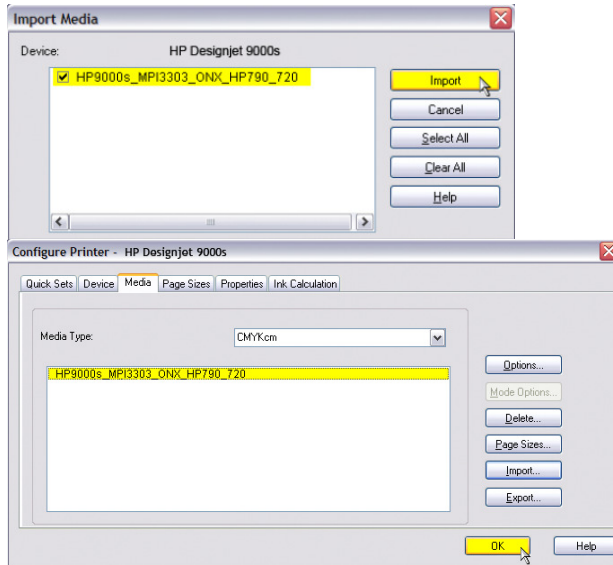


2. In the Configure Printer window, select the **Media** tab and click **Import**. Browse to the .oml file extracted in Step 1, select it and **Open**. If it does not show the extracted profile, make sure the “Files of type” box is set to .oml.



Section 6 – Special Product Information Instructional Bulletin

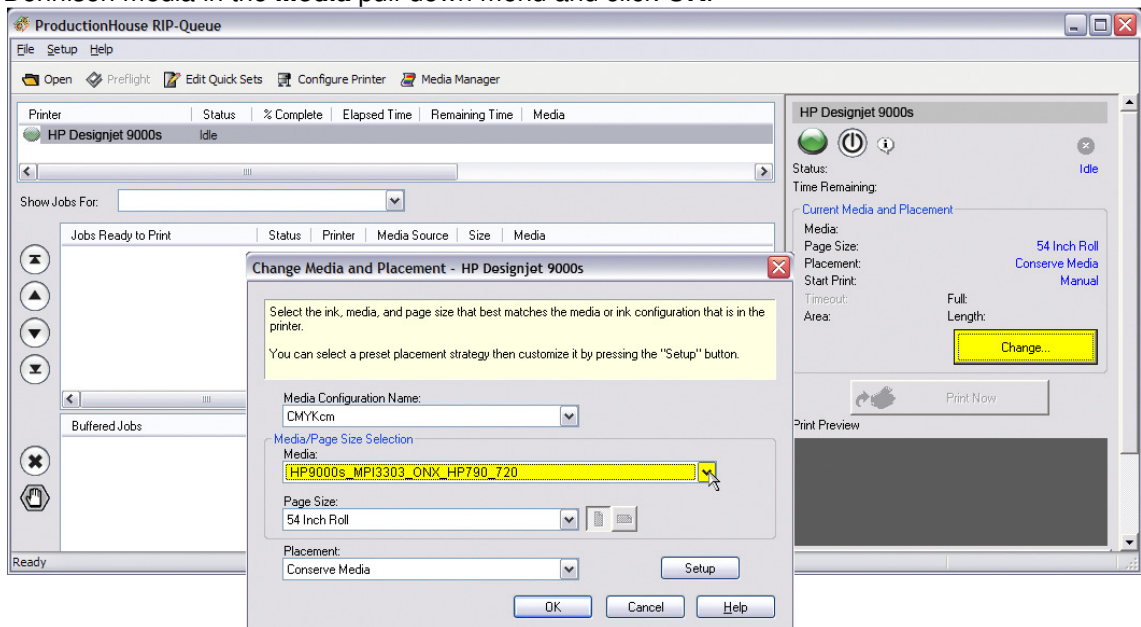
- In the Import Media dialog that appears, **check the box** beside the media name and click **Import**. The profile is now installed and will appear in the Media list in the Configure Printer window. Click **OK** to exit.



4.0 Applying

- Setting up RIP-Queue for printing:**

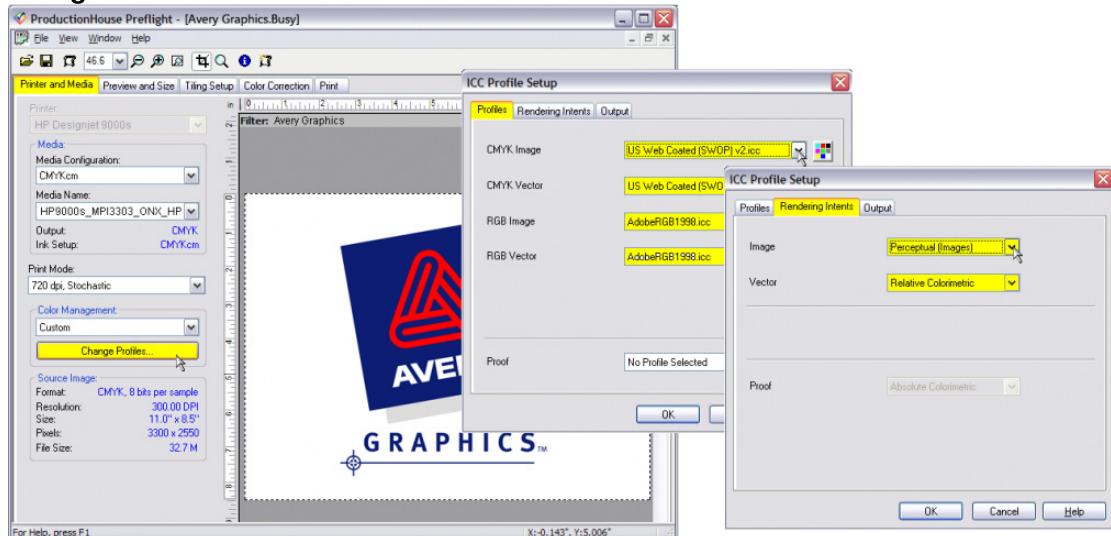
Click the **Change** button under “Current Media and Placement”. Select the Avery Dennison media in the **Media** pull-down menu and click **OK**.



Section 6 – Special Product Information Instructional Bulletin

2. Setting up a job for printing:

Open a job in Preflight, and click on the **Printer And Media** tab. The “Color Management” settings (Input Profiles and Rendering Intents) will be set to those of the Quick Set used when opening the job. If you have not pre-configured these in the Quick Set, the menu reads “All ICC Profiles Off”, or you wish to change them for this job, click **Change Profiles**.



Note: Onyx PosterShop will detect if the file contains an embedded ICC profile. If so, an option to use the embedded ICC profile will be available in the pull-down menu. It is suggested to choose this setting if available.

These settings will have an effect on your output, and may vary depending on printing requirements. For guidance on working with these settings and Onyx Quick-Sets, consult the Onyx PosterShop help file, or contact Avery Dennison Technical Support for further information.

5.0 Additional Notes

- **Media Profile does not show in Preflight or Media Manager after installing** – There may be instances when the media profile does not show up immediately in Preflight or Media Manager after installation. This may happen if those applications were open during installation. It is recommended that those applications either be closed prior to installation, or closed and re-launched if the media does not appear.
- **Feed Adjustment and Alignment Settings** - The media profiles do not contain feed adjustment settings. It is recommended to set this manually on the front panel of the printer when loading a new roll of media and additionally as needed. It is also recommended to check and perform the printer's Bi-Directional alignments. Depending on the printer manufacturer, different terminology may be used for these adjustments. Please consult your manual for further information on accessing these features.

Correct feed adjustment will help minimize or eliminate associated horizontal banding, and correct bi-directional alignment will improve dot placement for a crisper, less “grainy” look.

Section 6 – Special Product Information Instructional Bulletin

- **Default Profile Settings** - The media profiles have been provided with default settings that have been found optimal for printing with Avery Dennison media. It is generally recommend that the pre-determined print speed, ink limit information, etc., not be changed as doing so may introduce ink drying, color or other printing issues. To address the unique characteristics of a specific printer and printing environment, heater settings may be adjusted incrementally as necessary, and re-linearization is recommended if possible.
- The information contained herein is believed to be reliable but Avery Dennison makes no representations concerning the accuracy or correctness of the data. This product, like any other should be tested by the customer/user thoroughly under end user conditions to ensure the product meets the particular requirements. Independent results may vary.

Avery Dennison® and the logo are registered trademarks of Avery Dennison Corp.
Revisions have been italicized.

Onyx PosterShop® is a registered trademark of Onyx Graphics, Inc.

Other third party trademarks and trade names may be used herein and are the property of their respective owners.

©2011 Avery Dennison Corporation. All Rights Reserved.

Section 6 – Special Product Information Instructional Bulletin

Page 4 of 4



Graphics
Solutions

www.graphics.averydennison.com
Customer Service: 800-282-8379