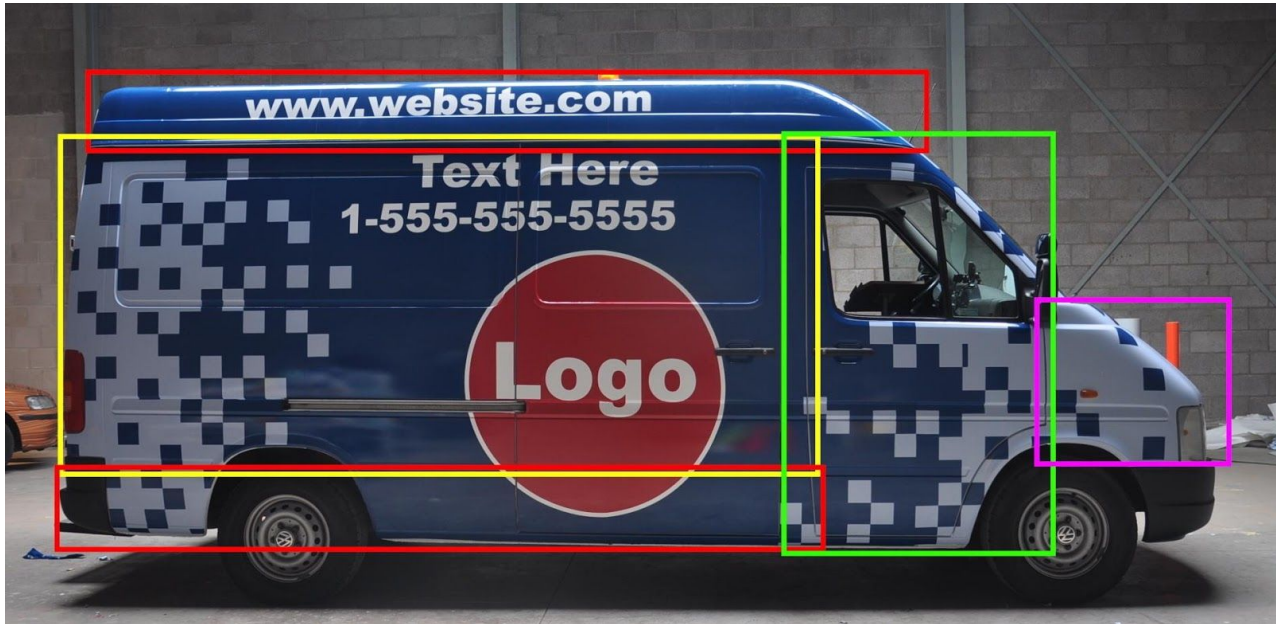


For the other panels, the excess film will be cut off on the body breaks which means no overlaps. Higher quality and better durability.



10 – Alignment/Key Panel/Overlap

Alignment: Alignment is critical in order to get professional results. Always double-check where the image and text lay on the vehicle before committing the panel with a permanent hinge. Also, make sure that if window perforation is being used, check that it fits before installing the sides and back.

For alignment on the hood, trunk and roof areas, measure from symmetrical sections on the vehicle to straight lines or center points on the text/images.

For the passenger/driver sides of the vehicle, never use the ground or a water/laser level to judge a panel straight. The ground can be uneven or the front and back suspension can be at different heights.

It's best to use natural, straight breaks on the vehicle. These straight lines can vary from vehicle to vehicle. For most vehicles, the bottom of the doors will be straight. On some vans, vertical lines can be found on the sides of doors. Avoid using body lines to make the graphics straight as these can curve slightly up or down from one side of the vehicle to the other. If the bottom of the doors are not straight, running a strip of masking tape in between the middle of the hubcaps along the length of the car will create a straight line to measure from.